

---

# The Two Piece Jigsaw Puzzle

## **How Can I Use This Material?**

In summary, if you work in a school, you can copy and/or modify it and use it with your students. We hope that this material will help you write your tests, worksheets, exams, presentations and any other educational materials. You cannot claim copyright over the material or present it as your own work.

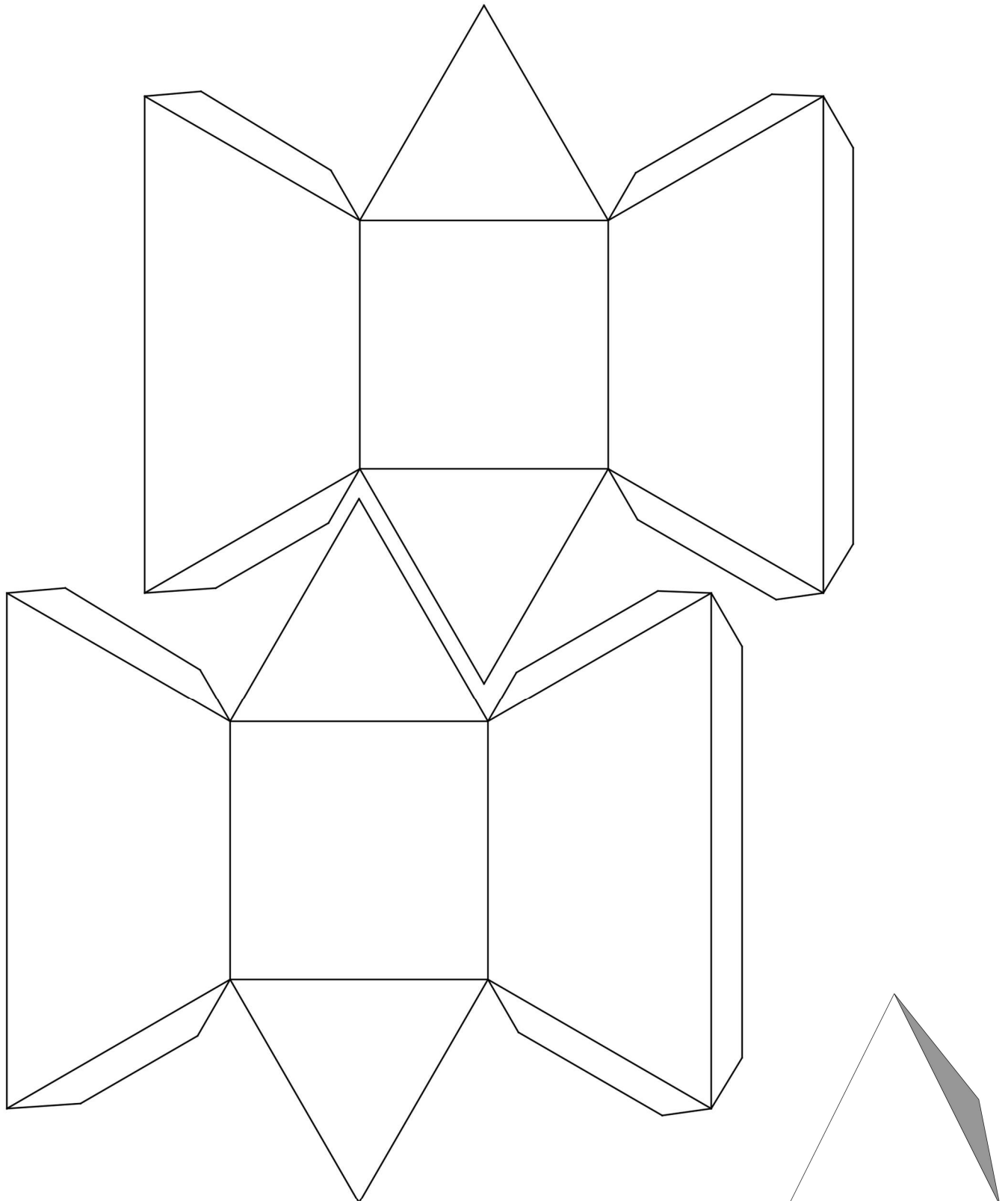
A full Acceptable Use FAQ is available on our website ([Acceptable Use FAQ](#)).

## **How Do I Use The Videos?**

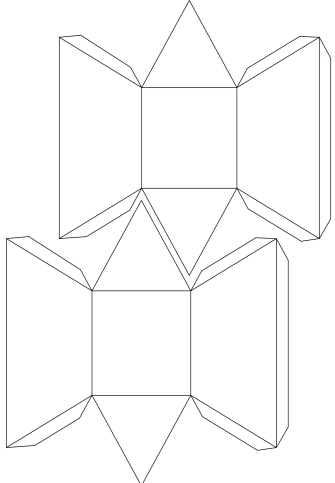
1. Copy the link into your web browser.
2. Left clicks have a quiet click sound.
3. Right clicks have a loud click sound.

## The Two Piece Jigsaw Puzzle

1. Cut out and glue the two pieces. The more accurate you are, the better your puzzle will be.
2. The two pieces fit together to make a tetrahedron (shown below). Many people find this puzzle amazingly difficult.



## How We Drew the Diagram

	<p><a href="http://www.youtube.com/v/DOQ0H2qli-Y&amp;hd=1&amp;autoplay=1">http://www.youtube.com/v/DOQ0H2qli-Y&amp;hd=1&amp;autoplay=1</a></p>
---	--